

Over 145 Years of Service

ESTABLISHED 1878

THE GEORGE J. FALTER CO.

Wholesalers

georgejfalter.com 410-644-6414

Oldest Candy Distributor in Maryland

HAPPY  
Thanksgiving

**Bonus Buy**  
Look For Our  
"Bonus Buys"  
In This Red  
Circle!

Check Out Our Website:  
[www.georgejfalter.com](http://www.georgejfalter.com)

PRICES GOOD 11/3 - 11/29/2024



NOW  
AVAILABLE  
AT FALTER!

## 2/2.99 WRAPS

- 7356 Cookies & Cream
- 7357 Emerald Dream
- 2557 Yellow Dream
- 7359 Purple Dream
- 7361 Amber Dream



## 5 PACK WRAPS

- 7362 Strawberry Dream
- 7363 Banana Dream
- 7364 Natural Dark Leaf
- 7365 Honey Bourbon
- 7366 Russian Cream
- 7367 Sweet Aromatic



ASK YOUR SALES REP  
FOR MORE DETAILS.

FLAVORED TOBACCO ITEMS NOT AVAILABLE IN D.C.

HERSHEY'S

## KING SIZE 18 CT.

- 13906 Almond Joy
- 16556 Caramello
- 60659 Heath
- 20175 Cookies 'n' Creme
- 18156 5th Avenue
- 20220 Whatchamacallit
- 22857 Mounds
- 24718 PayDay
- 85854 Chocolatey PayDay



31<sup>09</sup>  
BOX

## ICE BREAKERS

ICE CUBES GUM  
TRAVEL CUPS  
40 PCS.

### 6 CT.

- 70103 Arctic Grape
- 70151 Black Cherry
- 44770 Cherry Limeade
- 93856 Cinnamon
- 70295 Fruit Punch
- 70614 Mint Crystal
- 70104 Raspberry Sorbet
- 70106 Wintergreen



19<sup>99</sup>  
BOX

3501 Benson Avenue • Baltimore, MD 21227 • (410) 644-6414

After Hour Answering Service • FAX (410) 646-3745 • 1 (800) 322-3491 (in Maryland) • [www.georgejfalter.com](http://www.georgejfalter.com)





# CANDY



**ON-LINE ORDERING**  
Now Available!  
Call Customer Service for Details!



**20<sup>79</sup> BOX** **12 CT.** 80428 **2.89 SRP**



**18 CT.**  
67204 Bites Fruit  
67275 Bites Paradise  
67824 Xtreme Belts Blue Raspberry  
67844 Xtreme Bites  
**16<sup>79</sup> BOX** **1.75 SRP**



**6.2 OZ. PEG**  
70365 Original  
70366 Sour  
**1<sup>89</sup> EACH**  
**3.19 SRP**



**HARIBO GOLD BEARS**  
51261  
**24 CT.**  
**1.45 SRP**  
**20<sup>34</sup> BOX**



**TURTLES**  
**24 CT.**  
28410 Original  
574068 Sea Salt  
**2.29 SRP**  
**33<sup>79</sup> BOX**



**CONCORD GUMBALLS**  
**36 CT.**  
90671 Cry Baby  
15269 Dubble Bubble  
**.35 SRP**  
**7<sup>49</sup> BOX**



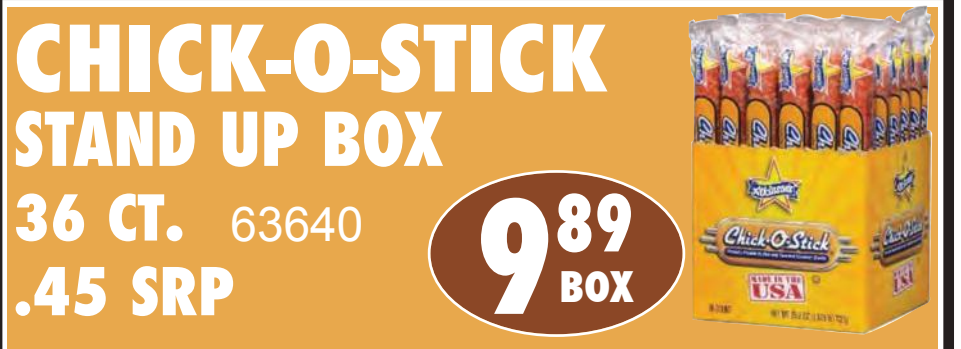
**Turtles Bites**  
The Original Caramel Nut Cluster  
**18<sup>69</sup> BOX**  
**CHANGEMAKER**  
**60 CT.**  
57330 **.55 SRP**



**ANDES SNAP BAR**  
**24 CT.**  
18750 **1.85 SRP**  
**23<sup>99</sup> BOX**



**AIRHEADS**  
**PEG BAGS**  
67206 Bites Fruit  
61158 Bites Paradise  
678524 Filled Bites  
67860 Sourfuls  
67838 Xtremes Berry  
67861 Xtremes Blue Raspberry  
67272 Filled Ropes  
**1<sup>69</sup> EACH**  
**2.75 SRP**



**CHICK-O-STICK**  
**STAND UP BOX**  
**36 CT.** 63640  
**.45 SRP**  
**9<sup>89</sup> BOX**



**CHARLESTON CHEW**  
**CHANGEMAKER**  
**120 CT.** 8910  
**.09 SRP**  
**8<sup>29</sup> BAG**



# CANDY

Over 145 Years of Service  
ESTABLISHED 1879  
THE GEORGE J. FALTER  
Candy Distributors in Maryland



## NOVELTY ITEMS

12 CT.

- 10269 Papcifier Dip-N-Lik
- 62628 King Cobra
- 62638 Sweet Shots
- 62662 Fast Fries Spray
- 62672 Sour Candy Grinder
- 62686 Pull Back Space Ship
- 62688 Alien Twist-N-Lik
- 626400 Splash Potty Dip-N-Lik
- 626700 Clacker Toy & Candy

1.75 SRP

**12<sup>29</sup>**  
BOX



ORIGINAL  
**GUMMI FUN MIX**

5 OZ.  
PEG

- 51211 Party
- 51214 Sour
- 51218 Swirlz
- 51210 Tropical Fish

**1<sup>15</sup>**  
EACH

2.15 SRP



**SOUR JACKS**  
MOUTH-PUCKERING CANDY!

5 OZ. PEG

- 12524 Blue Raspberry
- 12521 Original
- 12529 Wild Berry
- 12523 Watermelon

**1<sup>20</sup>**  
EACH

2.25 SRP



**Mamba**  
CHEWS

24 CT.

- 22510 Berrytasty
- 22310 Original
- 22410 Sour
- 53180 Tropics

1.89 SRP



Bonus Buy

**24<sup>49</sup>**  
BOX

**Mamba**  
PEG BAGS

7 OZ.

- 56372 Original
- 11743 Tropics
- 57874 Magic Sticks
- 57843 Fruit Strips

3.79 SRP



Bonus Buy

**2<sup>39</sup>**  
EACH



**GUMMIES**  
4 OZ.  
PEG BAG

**1<sup>48</sup>**  
EACH

55058  
2.15 SRP

Werther's  
Original  
**PEG BAGS**

- 35438 Original
- 37210 Chewy

1.75 SRP

**.99**  
EACH







# CANDY



## MIKE and IKE CHANGEMAKERS 24 CT.

- 48544 Berry
- 49552 Blue Raspberry
- 48546 Cherry
- 49550 Jolly Joes
- 49110 Orange
- 48543 Original
- 49107 Sour Lemon
- 48547 Sour Watermelon
- 48545 Tropical
- 48541 Hot Tamales



**5.11** BOX

**3/.99 SRP**



## SHARE SIZE 24 CT.

**39.99** BOX

- 27865 All Pink
  - 20044 FaveReds
  - 34996 Original
- 2.89 SRP**



**34.79** BOX

**36 CT. 34995 1.85 SRP**



## PEG BAGS

- 62212 Sugar Free
- Honey Lemon
- 37340 Cherry
- 37487 Defense Citrus
- 37400 Honey Lemon
- 37460 Mentholylptus
- 778367 Elderberry Immune
- 778368 Strawberry Lemonade Energy



**2.80** EACH

**4.09 SRP**



## 24 CT.

**23.99** BOX

- 25494 All Pink
- 32970 FaveReds
- 22895 Minis Original
- 25687 Minis Sour

**1.85 SRP**



## PEG BAGS

- 744697 Original
- 774698 Sour

**2.65 SRP**

**1.80** EACH



## 36 CT.

- 34917 Original
- 34915 Tropical
- 34914 Wild Berry

**34.79** BOX

**1.85 SRP**



## STARBURST GUMMIES SHARE SIZE 15 CT.

- 14696 Minis
- 29874 Original
- 29859 Pink

**2.89 SRP**



**24.99** BOX



## 24 CT.

- 28481 Smoothies
- 34916 Sour

**23.99** BOX

**1.85 SRP**





# CANDY



**SHARE SIZE  
24 CT.**

- 34918 Original
- 284853 Smoothies
- 44663 Sour
- 20059 Wild Berry
- 29296 Mega Tube

**2.89 SRP**



**39<sup>99</sup>  
BOX**



**BEEF STEAKS  
12 CT. 2 OZ.**

- 60030 Original
- 60230 Peppered
- 60733 Teriyaki

**26<sup>39</sup>  
BOX**

**3.75 SRP**



**ON-LINE  
ORDERING**  
Now Available!  
Call Customer Service  
for Details!



**PEG BAGS**

- 562703 Dark Chocolate
- 18166 Milk Chocolate
- 18154 White Fudge

**2<sup>75</sup>  
EACH**

**4.59 SRP**



**WRIGLEY**

A Subsidiary of Mars, Incorporated



**GUM**



**10 CT.**

- 247880 Ascent Wintermint
- 21265 Blue Cobalt
- 21267 Green Rain
- 21234 Prism Watermelon
- 21277 React Mint
- 24273 RPM Mint
- 21947 Sour Strawberry Flood
- 27651 Sweet Mint

**13<sup>19</sup>  
BOX**

**2.25 SRP**



**10 CT. 5 OZ.**

- 768804 Cinnamon Sugar
- 775460 Garlic Parmesan
- 768861 Honey Mustard
- 768856 Original
- 768813 Southwest

**4.99 SRP**



**28<sup>99</sup>  
CASE**



**GIANT NACHO  
TWIN PACK**

**24 CT.**

14236

**3.39 SRP**

**48<sup>99</sup>  
BOX**



**WRIGLEY'S "5"  
MEGA PACK**

**6 CT.**

- 27613 Cobalt
- 27614 Rain

**18<sup>79</sup>  
BOX**

**5.45 SRP**



**MICROWAVE  
POPCORN**

**18 CT.**

23223 Butter

23248 Butter Lovers **1.05 SRP**

**12<sup>93</sup>  
BOX**







# SNACKS



**SMALL  
GRAB n GO**  
12 CT. 1.41 OZ.

- 41715 BBQ
- 41720 Cheddar Cheese
- 41722 Original
- 41723 Sour Cream & Onion



**8<sup>79</sup>  
BOX**

**1.39 SRP**

**TASTE of NATURE  
COTTON CANDY**

12 CT. 3.1 OZ.

- 12883 Dr. Pepper
- 45270 Hawaiian Punch
- 107261 Stars & Stripes
- 22578 Starburst
- 22561 Skittles



**23<sup>49</sup>  
BOX**

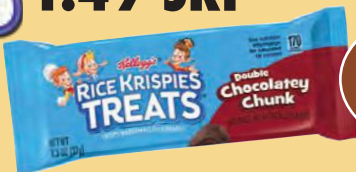
**3.15 SRP** (Clip Strips Are Included)

**RICE  
KRISPIES  
TREATS**

20 CT. 1.3 OZ.

- 22962 Regular
- 22975 Double Chocolate

**1.49 SRP**



**13<sup>99</sup>  
BOX**



**COOKIES**  
12 CT.



- 42501 Brownie White Fudge
- 42493 Milk Chocolate
- 42494 Oatmeal Raisin Nut
- 42495 White Chunk Macadamia
- 42505 Dark Chocolate Oatmeal



**1.39 SRP**

**7<sup>99</sup>  
EACH**

**Kellogg's PROTEIN MEAL BARS**

8 CT.

- 464685 Peanut Butter Chocolate
- 464686 Double Chocolate
- 473467 Strawberry

**2.19 SRP**



**10<sup>99</sup>  
BOX**



**COOKIE DOUGH BITES  
CHOCOLATE CHIP**

5 OZ. PEG BAG

40763

**2.79 SRP**

**1<sup>72</sup>  
EACH**



**CHEEZ-IT**

**7 OZ.  
BOX**

561406  
Original

**4.29 SRP**



**2<sup>79</sup>  
EACH**



**LARGE SIZE  
5.5 OZ.**

4342134  
Original

**3.79 SRP**

**1<sup>69</sup>  
EACH**



# SNACKS



## Chex mix



**8 CT. 3.75 OZ.**

- 693414 Bold Party Blend
- 693398 Cheddar
- 693412 Jalapeno Cheddar
- 693413 Traditional
- 693406 Honey BBQ
- 735492 White Cheddar

**Bonus Buy**

**13<sup>59</sup>**  
BOX

**3.49 SRP**

## Orchard Valley HARVEST®



**14 CT. 1.85 - 2 OZ.**

- 611244 Cranberry/Almond/Cashew Trail Mix
- 611247 Dark Chocolate Almonds
- 732799 Keto Crunchy Trail Mix
- 663879 Omega 3 Mix

**Bonus Buy**

**15<sup>99</sup>**  
BOX

**2.19 SRP**

**6 CT. 4 OZ.**

- 742891 Omega 3 Mix

**Bonus Buy**

**15<sup>79</sup>**  
BOX

**4.95 SRP**



## QUEST NUTRITION®



### PROTEIN BARS 12 CT.

**24<sup>99</sup>**  
BOX

- 677791 Birthday Cake
- 662201 Chocolate Chip Cookie Dough
- 662200 Cookies & Cream
- 662237 Oatmeal Chocolate Chip

### 3.49 SRP PROTEIN FROSTED COOKIES 8 CT.



- 781620 Strawberry Cake
- 753524 Birthday Cake
- 753522 Chocolate Cake

**NEW!**

**Bonus Buy**

**15<sup>99</sup>**  
BOX

### 3.49 SRP PROTEIN CANDY 12 CT.

- 763276 Chocolatey Peanut Coated Candies



**Bonus Buy**

**24<sup>99</sup>**  
BOX

**3.49 SRP**

**NABISCO**

## SNACK CRACKERS



- 41082 Ritz Crackers Original
- 41083 Wheat Thins Original
- 41100 Chicken in a Biskit
- 410105 Triscuit Original

**4<sup>09</sup>**  
EACH

**5.89 SRP**

**NABISCO**

## EASY CHEESE

**8 OZ. CAN**

14551

**6.49 SRP**



**4<sup>79</sup>**  
EACH





# GROCERY



## Kellogg's



### CEREAL

- 773934 Frosted Flakes 12 Oz.
- 775113 Froot Loops 8.9 Oz.
- 773939 Apple Jacks 8.9 Oz.

**7.19 SRP**

**4<sup>99</sup> EACH**

- 1029243 Rice Krispies 12 Oz.

**8.49 SRP**

**5<sup>09</sup> EACH**



### STOVE TOP STUFFING CHICKEN

**6 OZ.**

10520328

**3.35 SRP**

**2<sup>59</sup> EACH**



### CRANBERRY SAUCE

**14 OZ.**

504691

**2.85 SRP**

**1<sup>92</sup> EACH**



### GOLD MEDAL FLOUR

**2 LB.**

10570331

**3.49 SRP**

**2<sup>49</sup> EACH**



### SOUP

**10.5 OZ.**

10100219

Cream of Mushroom

1013056

Cream of Chicken

**2.69 SRP**



**1<sup>79</sup> EACH**

### HEINZ GRAVY

**12 OZ. GLASS**

1151550 Turkey

1151490 Beef

Homestyle

**3.99 SRP**

**2<sup>59</sup> EACH**



### FOLGERS COFFEE CLASSIC ROAST AUTOMATIC DRIP

**11.3 OZ. CAN**

10330551

**7.69 SRP**

**5<sup>09</sup> EACH**



### MOTT'S APPLE SAUCE

**24 OZ.**

10200260

**3.79 SRP**

**2<sup>64</sup> EACH**



### Bruce's YAMS

**CUT 29 OZ.**

10413

**4.09 SRP**

**2<sup>79</sup> EACH**



### DUNCAN HINES CAKE MIX

**15.25 OZ.**

122049

Yellow Devil's Food

**2<sup>44</sup> EACH**

**3.49 SRP**



### VIENNA SAUSAGE

**4.6 OZ.**

10130419

**1.25 SRP**

**.75 EACH**



### IDAHOAN INSTANT MASHED POTATOES

**13.75 OZ.**

155870

**4.09 SRP**

**2<sup>59</sup> EACH**





**REFRIGERATED**



**LAND O LAKES BUTTER QUARTERS**

**1 LB.**  
57222  
**8.09 SRP**

**5<sup>59</sup> EACH**



**BROWN & SERVE SAUSAGE**

**6.4 OZ.**  
572552 **3.39 SRP**



**2<sup>19</sup> EACH**

**Kraft CRACKER BARREL 8 OZ. BLOCK**

**SHARP**  
160586  
**5.59 SRP**

**3<sup>99</sup> EACH**



**RAPA SCRAPPLE**

**1 LB. EACH**  
598052  
**3.69 SRP**

**2<sup>49</sup> EACH**



**Kraft VELVEETA**

**8 OZ.**  
160396 **4.09 SRP**



**2<sup>77</sup> EACH**

**Sugardale BACON**

**12 OZ.**  
6787853  
**5.25 SRP**

**3<sup>59</sup> EACH**



**SMUCKER'S Uncrustables**

**8 CT. BOX**  
782716 PB & Strawberry Jelly  
**1.89 SRP**  
782603 PB & Grape Jelly  
**1.85 SRP**



**7<sup>59</sup> BOX**

**7<sup>29</sup> BOX**

Uncrustables are Delivered FROZEN and Have a 5 Day Thawed Shelf Life

**FROZEN**



**24 CT. 3 OZ.**

- 446426 Southwest Chicken
- 446428 Sausage, Egg & Cheese
- 446429 Ranchero Beef Steak
- 447544 Cheesy Pepper Jack
- 446431 Egg, Bacon, Cheese & Salsa
- 449158 Pepperoni & Cheese
- 516791 Habanero Cream Cheese
- 773527 Spicy Queso Beef

**1.69 SRP**

**21<sup>99</sup> BOX**



**Ore-Ida MICRO FRIES 4.7 OZ.**

19163 EZ Crinkle Cut  
**2.20 SRP**

**1<sup>29</sup> EACH**



**STEAK FRIES 28 OZ.**

35773  
**7.99 SRP**

**5<sup>29</sup> EACH**



# PERFETTI VAN MELLE

ON-LINE ORDERING  
Now Available!  
Call Customer Service  
for Details!



**AIRHEADS ASSORTED**  
**18-PK/BOX**  
61098



**AIRHEADS BITES**  
**18/BOX**

- 67204 Fruit
- 67275 Paradise Blends



**AIRHEADS XTREMES**  
**18/BOX**  
67844 Bites



**AIRHEADS GUM**  
**12/BOX**

- 15769 Blue Raspberry
- 1615725 Raspberry Lemonade
- 15705 Watermelon



# mentos

**ROLLS**  
**15/Box**

- 24189 Cinnamon
- 24180 Mint
- 24183 Strawberry
- 24184 Green Apple
- 24181 Mixed Fruit
- 24185 Rainbow



**AIRHEADS XTREMES BITES**  
**KING SIZE**  
**18/BOX**

67845



**AIRHEADS PEG BAGS**  
**EACH/6 Oz.**

- 67838 Bites Berry
- 67206 Bites Fruit
- 678524 Filled Bites
- 67838 Xtremes Berry
- 67861 Xtremes Blue Raspberry
- 611514 Gummies Fruit
- 61084 Mini Stripes Bar
- 61158 Paradise Blends
- 67860 Sourfuls



**AIRHEADS CHANGEMAKER GRAVITY DISPLAY**  
**60/BOX** 67037



# mentos GUM

**10/BOX**

- 63645 Pure Fresh Mint
- 63619 Pure Fresh Spearmint
- 63655 Pure Fresh Wintergreen
- 63625 Red Fruit/Lime



**6/BOX**

- 61130 Sour Grape
- 63635 Sour Strawberry
- 1659238 Citrus with Vitamins
- 1659262 Berry with Vitamins







**MORE DEALS!**



**QUEST**  
NUTRITION®

**NEW!**

**PROTEIN ICED COFFEE**  
**12 CT./10 OZ.**

766419 Mocha Latte

776418 Vanilla Latte

**3.79 SRP**

**SPECIAL  
INTRO PRICE!!**  
**24<sup>99</sup>**  
**CASE**



**Pierre**  
**BIG AZ**



**SAVE  
10%**

**EACH**

11000 Country Fried Chicken 9.4 Oz.

541421 Rack O Ribs BBQ Pork 8.6 Oz.

**2<sup>77</sup>**  
**EACH**

**EACH**

10947 Beef Charbroil w/Chs 8.9 Oz.

620811 Jalapeno Burger w/Chs 9.7 Oz.

620813 Bacon Addict Burger w/Chs 9.35 Oz.

**3<sup>32</sup>**  
**EACH**

**EACH**

541427 Spicy Chicken w/Chs 10.2 Oz.

599722 Chicken Bacon Ched Club 8.75 Oz.

541438 Ultimate Omelet 9.75 Oz.

**3<sup>04</sup>**  
**EACH**

**EACH**

620302 2X Sausage Cheese Biscuit 7.4 Oz.

620303 Bacon Sausage Egg Chs 6.96 Oz.

**2<sup>36</sup>**  
**EACH**

**Deli  
EXPRESS.**

**COLD SANDWICHES, SUBS, WRAPS  
and SLIDERS**



**SAVE  
10%**

**EACH**

491178 Albacore Tuna Wedge Wheat 5 Oz.

491181 Mega Italian 6 Oz.

581942 Ham & Swiss 6.5 Oz.

581943 Turkey & Cheese 6.3 Oz.

**EACH**

**3.05**

**3.54**

**3.77**

**3.77**

**EACH**

771780 Sub Ham Swiss w/Hny Must 6 Oz.

771781 Sub Trky Prov Dijon Must 6 Oz.

771782 Sub Italian 6 Oz.

**3<sup>78</sup>**  
**EACH**

**EACH**

636721 Wrap Turkey Club 8 Oz.

655577 Wrap Chicken Caesar 8.6 Oz.

658185 Wrap Buffalo Chicken 8.6 Oz.

552414 Wrap Italian Style 8.2 Oz.

**4<sup>41</sup>**  
**EACH**

**EACH**

716798 Sliders Ham/Swiss

Kings Hawaiian 4.3 Oz.

716807 Sliders Trky/Chd Kings Haw 4.3 Oz.

**3<sup>58</sup>**  
**EACH**





# MORE DEALS!



# Mamba

# STORCK

We create joy

# Werther's Original

## 24 CT.

- 53180 Tropics
- 22510 Berrytasty
- 22410 Sour
- 22310 Original

## 7 OZ. PEG BAGS

- 56372 Original
- 11743 Tropics
- 57843 Fruit Strips
- 57874 Magic Sticks

## CHANGEMAKERS

- 30143 Original
- 53210 Tropics



## ROLL

30155

## PEG BAGS

- 35438 Original
- 37210 Soft



# Welch's

FAMILY FARMER OWNED

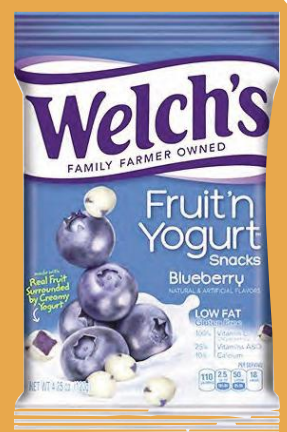
## PEG BAGS

## FRUIT 'n YOGURT

### 12 CT.

- 122804 Blueberry
- 122866 Strawberry

2.75 SRP

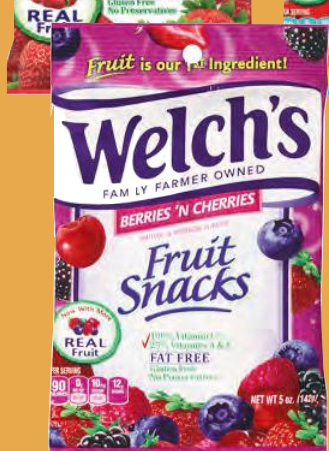


## JUICEFULS

### 12 CT.

- 41251 Mixed Fruit
- 41252 Island Splash
- 41253 Berry Blast

2.39 SRP



## FRUIT SNACKS

### 12 CT.

- 105091 Island Fruit
- 105092 Berries
- 105096 Strawberry
- 105098 Mixed Fruit

2.39 SRP



**FOOD SERVICE**

# CAPPUCCINO

The Days are Getting Cooler  
so Warm Up  
with Hot Cappuccino!



## 6-2 LB/CASE

Equipment Options Available For Purchase.  
Please Contact Your George Falter Sales Rep for Details

- |       |                |       |                         |
|-------|----------------|-------|-------------------------|
| 82317 | Hot Chocolate  | 82204 | Original                |
| 82210 | English Toffee | 82238 | Peppermint Pattie       |
| 82000 | French Vanilla | 82017 | Pumpkin Pie             |
| 82203 | Hazelnut       | 82229 | Salted Caramel          |
| 82206 | Mocha          | 82213 | White Chocolate Caramel |



## KEURIG



### FRAC PACKS

### K-CUPS

#### 50 CT. 2.2 OZ.

- 699307 Decaf
- 699311 Hazelnut
- 699474 Island Coconut
- 699305 Dark Magic
- 699310 French Vanilla
- 711843 Sumatran Reserve

#### 100 CT. 2.2 OZ.

- 699302 Our Blend
- 699312 Colombian Select
- 699303 Breakfast Blend

#### 40 CT. 2.8 OZ.

- 699313 REVV



#### 24 CT.

- 699186 Dark Magic XB
- 699200 Donut Shop Regular
- 716810 Swiss Miss
- Hot Chocolate
- 699167 Celestial Seasonings
- Green Tea
- 699188 Decaf Breakfast Blend
- 699192 French Vanilla
- 699179 Breakfast Blend



Please Contact Your George J. Falter Sales Rep for Equipment Information!

- Cappuccino Machines • Coffee Brewers • Pour Overs • Airpots • Keurig Machines





# FOCUS ITEMS for NOVEMBER



## PERFETTI

- |       |                                |       |
|-------|--------------------------------|-------|
| 61456 | Airheads Sour Blue Blast       | 36/Bx |
| 61457 | Airheads Sour Watermelon       | 36/Bx |
| 61458 | Airheads Sour 5 Pack           | 18/Bx |
| 61461 | Peg Airheads Bars Sour 4.4 Oz. | Each  |
| 61460 | Peg Airheads Mini Sour 3 Oz.   | Each  |
| 61515 | Theater Box Airheads Sour      | 12/Bx |



## HERSHEY

- |       |                                    |      |
|-------|------------------------------------|------|
| 72507 | Ice Breakers Raspberry/Lemon Mints | 8/Bx |
| 72706 | Ice Breakers Pineapple/Mango Mints | 8/Bx |
| 72061 | Ice Breakers Cinnamon Tin          | 8/Bx |
| 72389 | Ice Breakers Duo Mints Watermelon  | 8/Bx |
| 72336 | Ice Breakers Duo Mints Raspberry   | 8/Bx |
| 72335 | Ice Breakers Duo Mints Strawberry  | 8/Bx |



## PURES FOOD GROUP

- |        |   |       |
|--------|---|-------|
| 600100 | Carley's 1.99 Soft Bake Chocolate Chip  | 12/Cs |
| 600110 | Carley's 1.99 Soft Bake Iced Lemon      | 12/Cs |
| 600150 | Carley's 1.99 Soft Bake Iced Oatmeal    | 12/Cs |
| 600160 | Carley's 1.99 Soft Bake Iced Strawberry | 12/Cs |
| 500130 | Carley's 1.99 Soft Bake Oatmeal Raisin  | 12/Cs |



## TOOTSIE ROLL

- |       |                         |       |
|-------|-------------------------|-------|
| 21555 | Junior Mints            | 24/Bx |
| 17105 | Charleston Chew Vanilla | 24/Bx |
| 22405 | Dots                    | 24/Bx |



## JACK LINK'S

- |       |  |       |
|-------|--|-------|
| 10391 | Jack Link's Beef & Cheese All American | 16/Bx |
| 10400 | Jack Link's Beef & Jalapeno Cheese     | 16/Bx |



## HOSTESS

- |        |                               |      |
|--------|-------------------------------|------|
| 590575 | Chocolate Zingers             | 6/Bx |
| 590578 | Raspberry Zingers             | 6/Bx |
| 689710 | Glazed Strawberry Jumbo Donut | 6/Bx |
| 689711 | Glazed Blueberry Jumbo Donut  | 6/Bx |
| 724896 | Glazed Classic Jumbo Donut    | 6/Bx |



## JJ's PIES

- |       |                    |       |
|-------|--------------------|-------|
| 14032 | Cherry 4 Oz.       | 12/Bx |
| 14033 | Boston Cream 4 Oz. | 12/Bx |
| 14034 | Lemon 4 Oz.        | 12/Bx |
| 14035 | Berry 4 Oz.        | 12/Bx |
| 14036 | Chocolate 4 Oz.    | 12/Bx |







# HEALTH & BEAUTY



**ON-LINE ORDERING**  
Now Available!  
Call Customer Service  
for Details!

## GEMS COUGH DROPS 12 CT.

17202 Cherry  
171024 Honey Lemon  
**.85 SRP**



**Bonus Buy**

**6<sup>89</sup>  
BOX**

## BULK EXCEDRIN 25 CT.

18680 **1.19 SRP**

**12<sup>47</sup>  
BOX**



## ALKA-SELTZER PLUS BULK 30 CT.

28300 **1.79 SRP**

**22<sup>63</sup>  
BOX**



## BULK CLARITIN 25 CT.

20025 **2.25 SRP**

**31<sup>54</sup>  
BOX**



## COLGATE TOOTHPASTE 1 OZ.

59510 **1.09 SRP**

**.73  
EACH**



## ChapStick® PEG CARDS

**ORIGINAL**  
59225  
**STRAWBERRY**  
59230  
**CHERRY**  
59232  
**2.65 SRP**

**1<sup>79</sup>  
EACH**



## SECRET POWDER FRESH 6 CT. 1.7 OZ.

61151 **3.29 SRP**

**13<sup>49</sup>  
6 PK**



## CLEAR EYES 12/.2 OZ.

107800  
**2.95 SRP**

**24<sup>11</sup>  
6 PK**







# GENERAL MERCHANDISE



ON-LINE ORDERING  
Now Available!  
Call Customer Service  
for Details!

## HANSAVER GLOVES LARGE

60110 **2.75 SRP**



**1.87**  
PAIR

## WINCO FIRE RESISTANT 15" OVEN GLOVE

**3.07**  
EACH

65478



## RAID HOUSE & GARDEN 11 OZ.

1385080 **5.85 SRP**

**4.48**  
EACH



## COSMOS BEEF JERKY 18 - 2 CT.

667939 **2.49 SRP**



**23.99**  
BOX

## BROWN JERSEY GLOVES 12 PAIR

68708 **1.15 SRP**

**9.30**  
DOZ



## DOUGH-MUTTS 16 - 2 CT.

668596 **4.79 SRP**



**41.99**  
BOX

## Shell ROTELLA 15W40 6/QUARTS

49483  
**7.09 SRP**

**29.34**  
CASE



## ANTIFREEZE & COOLANT 50/50 6 CT. 1 GALLON

**38.25**  
CASE

70513  
**9.59 SRP**



## OIL-DRI OIL ABSORBENT 28 QT. BAG

70399 **16.19 SRP**

**11.16**  
BAG



## WINDSHIELD WASHER -20° 6 CT. 1 GALLON

70459 **4.05 SRP**

**16.09**  
CASE



## GASLINE ANTI-FREEZE 12 OZ.

70263 **3.05 SRP**

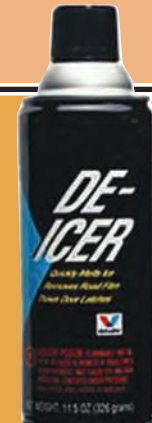
**2.07**  
EACH



## WINDSHIELD DE-ICER 11 OZ.

70455 **5.14 SRP**

**3.67**  
EACH







# BEVERAGES

Ask Your Falter Sales Rep for Details on Quantity Discount Specials!



**17<sup>99</sup>**  
CASE

**PRE-PRICED .99**  
**24/23.5 OZ. CANS**

- 44754 Fruit Punch
- 44758 Grape
- 44751 Green Tea
- 44756 Mango
- 44762 RX Energy
- 44750 Southern Tea
- 44761 Strawberry Kiwi
- 44757 Tea w/Lemon
- 44753 Watermelon
- 44752 Half & Half  
Lemonade Tea
- 44755 Orangeade



## COKE PRODUCTS

**24 CT.**  
**20 OZ. BOTTLES**

- 440108 Coke
- 440110 Diet Coke
- 44570 Cherry Coke
- 440115 Sprite
- 440118 Sprite Zero

**2.09 SRP**



**27<sup>99</sup>**  
CASE

SINCE 1868  
**Martinelli's**  
GOLD MEDAL®

## SPARKLING CIDER

**25.4 OZ.**

**NEW!**

- 151355 Blush
- 151356 Apple
- 151358 Apple Cranberry
- 151359 Apple Grape

**5.79 SRP**



**3<sup>99</sup>**  
EACH



**29<sup>99</sup>**  
CASE

**PINEAPPLE JUICE**  
**48 CT. 6 OZ.**

44335 **.99 SRP**



**24 CT.**  
**20 OZ. BOTTLES**

- 440116 Grape
- 440109 Orange
- 440161 Pineapple
- 440160 Strawberry

**2.09 SRP**



**27<sup>99</sup>**  
CASE



**13<sup>99</sup>**  
CASE

**12 CT. 16 OZ.**

- 43613 Berry Blend
- 43617 Fruit Medley
- 43611 Strawberry Kiwi
- 43610 Tropical Blend

**2.15 SRP**



**MIXERS**  
**6 CT.**  
**1.75 LITER**

**30<sup>99</sup>**  
CASE

- 105432 Margarita
- 105433 Sweet & Sour
- 105434 Pina Colada
- 105435 Strawberry  
Daiquiri

**6.99 SRP**

**12 CT.**  
**1 LITER**

**35<sup>99</sup>**  
CASE

- 105417 Margarita
- 105414 Pina Colada
- 105413 Strawberry  
Daiquiri
- 105420 Sweet & Sour

**4.99 SRP**



## Tropicana JUICES

**32 OZ. 12 CT.**

- 44040 Apple
- 44065 Cranberry Cocktail
- 44080 Orange
- 44060 Ruby Red  
Grapefruit

**4.69 SRP**



**34<sup>09</sup>**  
CASE



## CRANBERRY COCKTAIL

**8/64 OZ.**

203340 **5.59 SRP**

**32<sup>49</sup>**  
CASE



## JUICE

**12/32 OZ.**

- 106658 Original
- 401958 Picante

**4.79 SRP**

**38<sup>49</sup>**  
CASE



## IBC

**24 CT. 12 OZ.**  
**GLASS BOTTLES**

- 423188 Cream Soda
- 505500 Rootbeer

**1.99**  
SRP

**24<sup>59</sup>**  
CASE



## SQUEEZE JUICE

**24/4.5 OZ.**

- 43736 Lime
- 43734 Lemon

**1.49 SRP**

**16<sup>99</sup>**  
CASE

**Bonus Buy**







# PAPER GOODS / FOOD SERVICE



## HOT PAPER CUPS & LIDS

63680	12 Oz. Cup	1000/Cs	<b>65.99</b>
63700	16 Oz. Cup	1000/Cs	<b>69.99</b>
63760	20 Oz. Cup	500/Cs	<b>45.99</b>
64102	Lids/Fits All/ Black	1000/Cs	<b>46.99</b>



## PURE BRIGHT GERMICIDAL BLEACH

32 OZ. BOTTLE

604034

**2.91 SRP**

**1.79**  
BOX



## WAXED DELI PAPER

15" x 10<sup>3</sup>/<sub>4</sub>"

500 CT. BOX

50450



**9.99**  
BOX

## PAPER TOWELS PREMIUM QUILTED



7005105 **1.69 SRP**

**15.99**  
BDL

## COFFEE STIRRERS WOODEN

5<sup>1</sup>/<sub>2</sub>" x 1/4"

1000 CT. BOX

**3.69**  
BOX

55015



## WHITE CLOUD TOILET TISSUE 4 PACK

176 - 2 PLY  
SHEETS PER ROLL

50640

**5.25 SRP**

**3.20**  
PACK



## TOWEL MULTIFOLD WHITE

400 CT. CASE

803874



**38.99**  
CASE



## KRAFT RIPPLE HOT CUPS

BUILT-IN JACKET ON CUP  
TO PROTECT AGAINST HOT!!

12 OZ.

500 CT. CASE 707013

**60.99**  
CASE

16 OZ.

500 CT. CASE 707014

**65.99**  
CASE

20 OZ.

500 CT. CASE 707015

**85.99**  
CASE

HOT CUP LID

1000 CT. CASE

707016

**29.99**  
CASE



## POP-UP FOIL SHEETS

10<sup>3</sup>/<sub>4</sub>" x 12"

500 CT. BOX 50620



**29.99**  
BOX

## FABRIC NON-WOVEN 12x7x22 BAG

100/CASE 51112



**12.55**  
CASE



# PAPER GOODS / FOOD SERVICE



## REGULAR BAGS at Low, Low, Prices!

2 LB.	500 CT.	50720	8.99
4 LB.	500 CT.	50760	10.99
5 LB.	500 CT.	50780	13.99
6 LB.	500 CT.	50800	14.99
8 LB.	500 CT.	50820	17.99
12 LB.	500 CT.	50860	22.99

## EXTRA HEAVY DUTY BAGS

12 LB. HEAVY	400 CT.	50960	24.99
20 LB. SHORT BEER	300 CT.	51001	51.99
25 LB. SHORT BEER	300 CT.	51011	48.99

## 55 GALLON EXTRA EXTRA HEAVY DUTY BLACK CAN LINERS 100 CT. CASE

58019

**42<sup>99</sup>**  
CASE



## PAPER TOWELS 15 ROLL/70 SHEETS BUNDLE

50603 **1.85 SRP**

**16<sup>99</sup>**  
BUNDLE



## 2 PLY TOILET TISSUE 36 ROLL/325 SHEETS BUNDLE

50641 **1.09 SRP**

**22<sup>99</sup>**  
BUNDLE



## BLACK PLASTIC 1/10 HANDLE BAGS

### 1000 CT. CASE

51096



**11<sup>99</sup>**  
CASE



## GREEN HERITAGE PAPER TOWELS

### 85 SHEETS PER ROLL 30 ROLL CASE

50595 **1.39 SRP**

**24<sup>99</sup>**  
CASE



## FLOWER LOGO HOT PAPER CUP

### 12 OZ. FLOWER PRINT HOT PAPER CUP

37290 1000 CT.

**59<sup>99</sup>**  
CASE

### 16 OZ. FLOWER PRINT HOT PAPER CUP

37300 1000 CT.

**67<sup>99</sup>**  
CASE

### 20 OZ. FLOWER PRINT HOT PAPER CUP

37341 500 CT.

**46<sup>99</sup>**  
CASE

### LIDS - SIP FOR FLOWER PRINT HOT PAPER CUP FITS 12-20 OZ.

37310 500 CT.

**37<sup>99</sup>**  
CASE



## PLASTIC PARTY BOMBER CUPS

25 CT. PACK 8110905 **5.99 SRP**

**3<sup>69</sup>**  
PACK

## BROWN ROLL TOWELS

7<sup>7</sup>/<sub>8</sub>" x 350'  
12 CT. CASE

50585

**28<sup>99</sup>**  
CASE







# TOBACCO & CIGARS

Applicable "STATE" OTP Taxes Included Except Where Noted!

ON-LINE ORDERING Now Available! Call Customer Service for Details!



**NEW!** at FALTER for the HOLIDAYS!

## HOLIDAY LIGHTERS COLLECTION

50 CT. TRAY

7436

**58<sup>49</sup>** TRAY



**75<sup>95</sup>** TRAY

## NFL LIGHTERS

50 CT. TRAY

- 2702 Ravens
- 2783 Commanders
- 2707 Eagles



Other NFL Teams May Be Available!



## LIGHTERS

**REGULAR** 50 CT. TRAY 2513

Buy 1 at **47<sup>99</sup>** TRAY

Buy 2 at **47<sup>59</sup>** TRAY

Buy 3 at **46<sup>99</sup>** TRAY



**MINI** 50 CT. TRAY 2514

Buy 1 at **40<sup>99</sup>** TRAY

Buy 2 at **40<sup>49</sup>** TRAY

Buy 3 at **39<sup>99</sup>** TRAY



**NEW!** EXCITING DESIGNS FROM BIC!

## SKULLS LIGHTERS

50 CT. TRAY

7271

**59<sup>95</sup>** TRAY



**NEW!** EXCITING DESIGNS FROM BIC!

## COUNTER CULTURE LIGHTERS

50 CT. TRAY

7270

**58<sup>49</sup>** TRAY

**NEW LOWER PRICE!**



**58<sup>49</sup>** TRAY

## OUTDOORS COLLECTION

50 CT. TRAY

7323



FLAVORED TOBACCO ITEMS NOT AVAILABLE IN D.C.









# TOBACCO & CIGARS

Applicable "STATE" OTP Taxes Included Except Where Noted!



## HERBAL WRAPS

- 5510 Grape
- 5511 Mango
- 5512 Sweet
- 5513 Melon
- 5514 Peach
- 5515 Honey
- 5516 Strawberry
- 5517 Apple

**5<sup>00</sup> OFF**

## 4 CARTON DISPLAY

5518

### CONTAINS:

- Melon
- Sweet
- Mango
- Grape

**SPECIAL! \$20<sup>00</sup> OFF DISPLAY**



## 10/12 CT.

- 2390 Black
- 2391 Ruby
- 2392 Emerald
- 2393 Special Filter
- 2394 Bali Hai
- 2395 Ivory
- 2396 Splash
- 2399 Mild



**2<sup>00</sup> OFF**



## BIG CIGARS FILTERED 100's 10/20 PACKS

- 3337 Tropical
- 3345 Wild Cherry
- 3340 Full Flavor
- 3344 Menthol
- 3339 Sweet
- 3346 Xotic Berry
- 3341 Xtreme Menthol
- 3347 Peach
- 3342 Classic (Light)
- 3348 Vanilla
- 3343 Grape
- 3338 Strawberry



**PLUS... AN EXTRA 1.00 OFF**

**VA Price! 13<sup>52</sup>**

**DE Price! 14<sup>61</sup>**

**MD Price! 18<sup>95</sup>**

DC/PA PRICE IS MORE DUE TO HIGHER TAX



## ALL NATURAL PREMIUM CIGAR WRAPS

Now Available at Falter in 5 Exciting Flavors!

### 5 PREMIUM WRAPS PER PACK

- 7107 Russian Cream
- 7108 Bloodshot
- 7109 Honey Berry
- 7110 Natural
- 7111 Dark Edition



**ADDITIONAL NOVEMBER SAVINGS! .50 OFF BOX**



## FLAT WRAPS 25/3 PACK

- 4427 Blue Palma
- 4426 Blueberry
- 4428 Chocolate
- 4429 Kiwi Strawberry
- 4430 Kush
- 4431 Mango
- 4432 Purple
- 4433 Sweet
- 4434 Watermelon
- 4435 Wet Cherry
- 4436 Wet & Fruity
- 4437 White Grape
- 4438 Zero

**PA Price! 11<sup>06</sup>**

**VA Price! 8<sup>86</sup>**

**DE Price! 11<sup>32</sup>**

**MD Price! 13<sup>74</sup>**

**DC Price! 16<sup>58</sup>**



## BROADLEAF LOOSE LEAFS

### 2 LOOSE LEAFS for \$1.99

- 7161 Aromatic
- 7162 Dark Leaf Premium
- 7163 Platinum Dark Leaf
- 7164 Russian Cream



**1<sup>00</sup> OFF**

FLAVORED TOBACCO ITEMS NOT AVAILABLE IN D.C.



# TOBACCO & CIGARS

Applicable "STATE" OTP Taxes  
Included Except Where Noted!



\*\*\*Swedish Match.

National Launch of Exciting Cigars!

## White Owl® TIPS

**NEW!** at FALTER!

PLASTIC TIP CIGARS

**SAVE on 2**

**15 CT. UPRIGHT  
FOIL FRESH POUCH**

- 7410 Classic
- 7407 Smooth
- 7408 Wine
- 7409 Cherry

**PRICING  
FLEXIBILITY!**



\*\*\*Swedish Match.

National Launch of Exciting Cigars!

## White Owl® TIPS

**NEW!** at FALTER!

PLASTIC TIP CIGARS

**TRIAL OFFER  
2 CIGARS \$1.29**

**15 CT. UPRIGHT  
FOIL FRESH POUCH**

- 7406 Classic
- 7399 Smooth
- 7404 Wine
- 7405 Cherry



**PREMIUM CIGARS AT A GREAT PRICE!**



**FRESH PACK  
NO HUMIDOR NEEDED!**

**3 PK/8 BOX**

- 3078 Churchill
- 3079 Robusto
- 3076 Toro



## PREMIUM CIGARS

Available at Falter!

- MACANUDO CRYSTAL 8's CAFE 1719
- ROMEO Y JULIETA 1875 CHURCHILL 2150
- ROMEO Y JULIETA RESERVE ROTHCHILDE 4410
- ONYX RESERVE CHURCHILL MADURO 2291



Other Premium Cigars Also Available  
from Your Falter Representative

## zone™

NICOTINE POUCHES

# INTENSITY & FLAVOR THAT LAST

**NEW!**

at FALTER!



**20 POUCHES  
PER CAN**

**5 CAN  
SLEEVE**

**AVAILABLE IN:**

- 7152 Dragonfruit 6mg
  - 7126 Dragonfruit 9mg
  - 7148 Mint 6 mg
  - 7149 Mint 9 mg
  - 7117 Spearmint 6mg
  - 7115 Wintergreen 6mg<sup>M</sup>
  - 7116 Wintergreen 9mg
- Other Flavors & Strengths Also Available.  
See Your Falter Sales Rep for Entire Assortment.

**FLAVORED TOBACCO ITEMS NOT AVAILABLE IN D.C.**



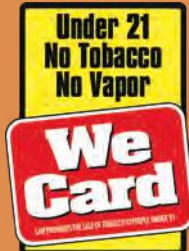


3501 Benson Avenue • Baltimore, MD 21227

**(410) 644-6414**

After Hr. Answering Service FAX (410) 646-3745

1 (800) 322-3491 (In Maryland) [www.georgejfalter.com](http://www.georgejfalter.com)



**BONUS BUYS!**

<p><b>Bonus Buy</b> <b>PAGE 3</b></p>	<p><b>Bonus Buy</b> <b>PAGE 3</b></p>	<p><b>Bonus Buy</b> <b>PAGE 6</b></p>	<p><b>Bonus Buy</b> <b>PAGE 7</b></p>
<p><b>Bonus Buy</b> <b>PAGE 7</b></p> <p><b>Orchard Valley HARVEST®</b></p>	<p><b>Bonus Buy</b> <b>PAGE 7</b></p>	<p><b>Bonus Buy</b> <b>PAGE 7</b></p>	<p><b>Bonus Buy</b> <b>PAGE 15</b></p>
<p><b>Bonus Buy</b> <b>PAGE 17</b></p> <p><b>ReaLemon</b></p>	<p><b>Bonus Buy</b> <b>PAGE 18</b></p> <p><b>White Swan</b></p>	<p><b>Bonus Buy</b> <b>PAGE 19</b></p> <p><b>White Swan</b></p>	<p><b>Bonus Buy</b> <b>PAGE 19</b></p>

**CHECK OUT THE NEW! ITEMS!!!**

<p><b>SEE PAGE 7</b></p>	<p><b>SEE PAGE 11</b></p>	<p><b>SEE PAGE 17</b></p>	<p><b>SEE PAGE 18</b></p>
		<p><b>SEE PAGE 20</b></p> <p><b>BIC</b></p>	